

Month 6 Base Rent Free!



For Lease

Suites Available!

12683 NE Whitaker Way Portland, OR 97230
Located Near Portland International Airport

12685, 12689 A,B, 12717 NE Whitaker Way

12683 NE Whitaker Way Portland, OR 97230

Kiely@GridPropertyManagement.com

503-406-2760

WhitakerIndustrialPark.com



12685, 12689 A,B, 12717 NE Whitaker Way
12683 NE Whitaker Way Portland, OR 97230

Kiely@GridPropertyManagement.com
503-406-2760
WhitakerIndustrialPark.com

Available Suites

- Suite 12685 **LEASED!**



PROPERTY FEATURES

- 4 buildings comprising approximately 85,860 sqft of rentable space
- Quick access to I-205 and I-84 - Near PDX
- Ideal for warehouse, production or light manufacturing usage
- Industrial park recently underwent site-wide improvements including fresh exterior paint, updated exterior lighting, and a parking lot repair/re-coat
- Each suite is located in a butler-style, insulated, pitched roof structure with high interior ceilings and wide spans
- Full site-wide digital camera security system with cloud storage

12685, 12689 A,B, 12717 NE Whitaker Way

12683 NE Whitaker Way Portland, OR 97230

Kiely@GridPropertyManagement.com

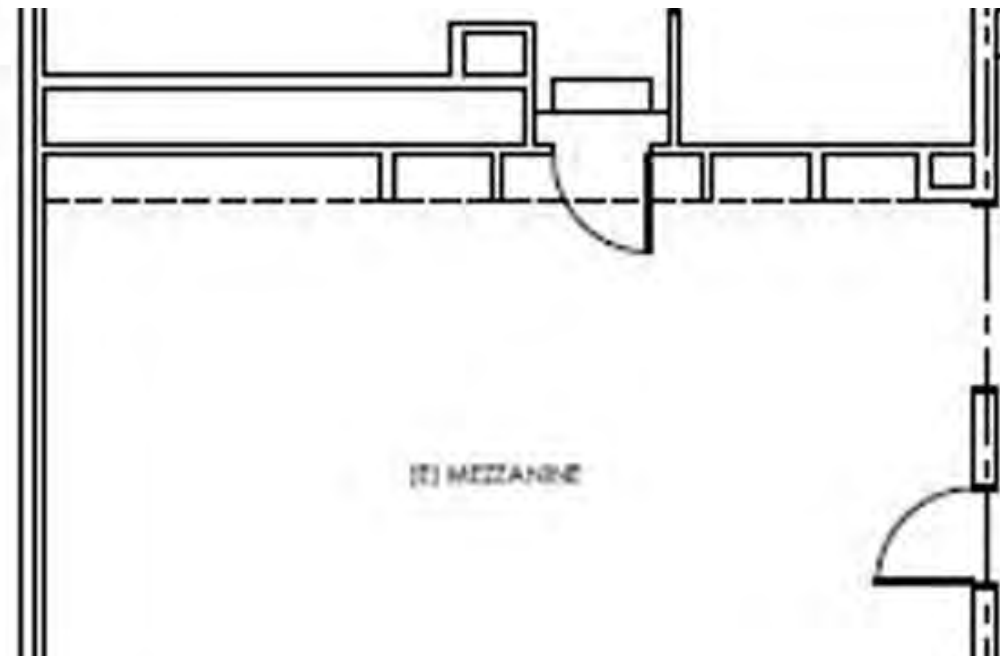
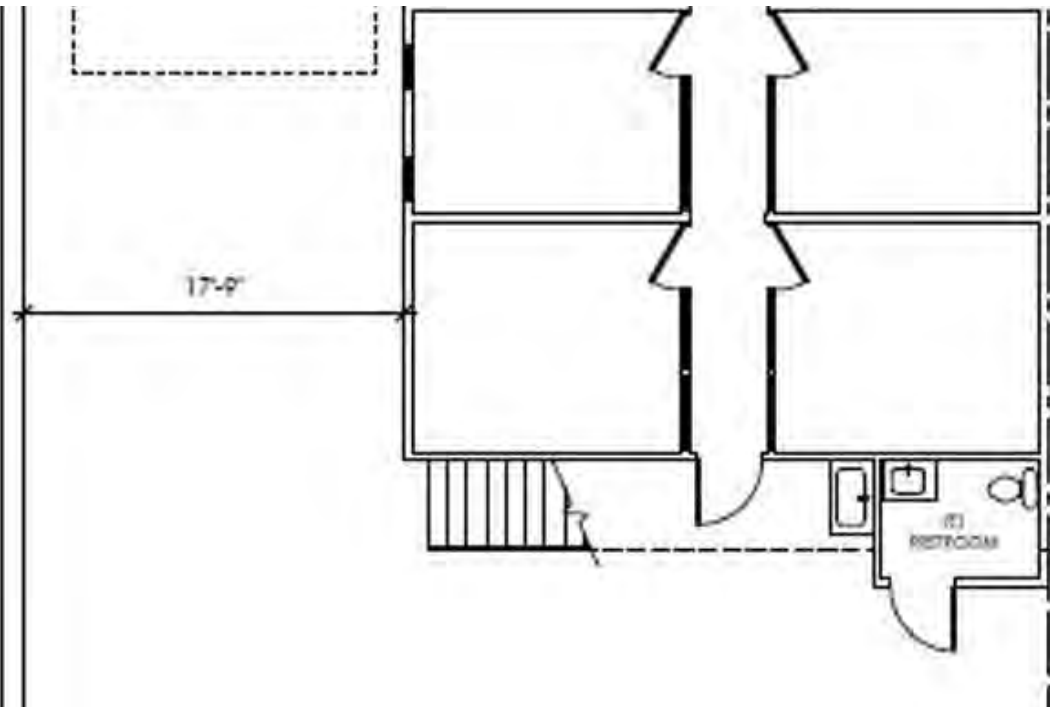
503-406-2760

WhitakerIndustrialPark.com

Suite 12685

AMENITIES

- 3,972 SqFt
- Private Office
- Mezzanine build-out
- One (1) 14' high roll-up door
- one (1) standard entry door
- High Interior Clearance
- Assigned Outdoor Parking



12685, 12689 A,B, 12717 NE Whitaker Way
12683 NE Whitaker Way Portland, OR 97230

Kiely@GridPropertyManagement.com
503-406-2760
WhitakerIndustrialPark.com



Suite 12685 - Pricing

- The first-year base rent rate is \$11.00 per year per square foot (\$3,641.00 per month), plus \$2.30 per year per square foot pro-rata allocation of triple net (NNN) costs (\$761.30 per month), resulting in all-in lease costs of \$4,402.30 per month for year 1 with 5% annual increases on base rent.
- **Base rent for month 6 of the lease ((\$3,641.00) will be abated. The tenant will still be responsible for paying the OpEx charge for month 6 of the lease (\$761.30).* Limited time, must sign a 12-month minimum lease.**
- One-year minimum lease. Extensions beyond one year are available.
- Tenants will also pay for their own electricity, gas, and garbage.



12685, 12689 A,B, 12717 NE Whitaker Way
12683 NE Whitaker Way Portland, OR 97230Whitaker Way

Kiely@GridPropertyManagement.com
503-406-2760
WhitakerIndustrialPark.com

Contact Us!

Kiely@GridPropertyManagement.com

503-406-2760

www.WhitakerIndustrialPark.com



Grid Property Management is a Portland-based property management firm that specializes in the management of commercial, and industrial property in the greater Portland metropolitan area.